



# PRODUCTION & ASSEMBLY

PRODUCT CATALOG

# WHY MAKITA® CORDLESS?

## INNOVATIVE CORDLESS TECHNOLOGY

Makita designs and manufactures innovative cordless tools utilizing the latest advanced technology that allows professionals the ability to use cordless tools on tasks previously thought to be impossible. Our goal in designing manufacturing & assembly cordless tools is to break away from the historical method of costly air hose operation and allow the operator freedom with a powerful, accurate and ergonomic solution.

Makita's launch of the Torque-Tracer wireless data communication tools add additional value within the manufacturing environment by providing features with improved Quality Assurance methods. Torque-Tracer's ability to capture fastening characteristics adds a traceability and communication component to quality management with subsequent gains in productivity.

## REDUCED ENERGY COSTS

**Less Energy Consumption** needed to power cordless tools than to power pneumatic tooling.  
**Extreme Energy Savings** by eliminating air line and air tool leakage.  
**Higher Quality Control** by reducing damage to manufactured products often caused by hoses and cords.  
**Reduced Operating Costs** and down time by eliminating oilers and oil maintenance.  
**Reduced Maintenance Costs** by minimizing down time to repair damaged products.

## MORE FREEDOM

**More Flexibility** to roam from one workspace to the next  
**Greater Access** and Maneuverability in confined workspaces and inside closed compartments  
**Increased Efficiency** with the ability to interchange tools from one application to the next  
**Easier to Reposition Fastening System** when assembly lines need to be rerouted, expanded or eliminated  
**Quicker Recoveries** from power interruptions

## SAFER WORKPLACE

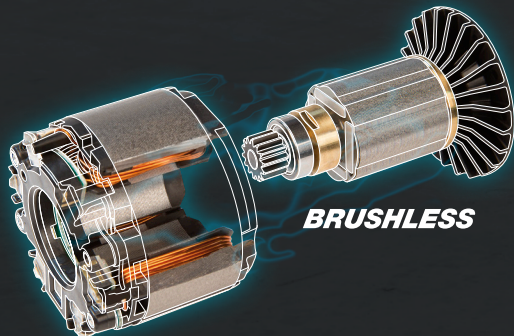
**Reduced Hazards** caused by air hoses laying across floors or hanging from ceiling  
**Lighter Weight with Ergonomic Design** for operator control  
**Lower Vibration and Noise** for operator comfort  
**Environmentally Friendly** low toxicity battery platforms



## BRUSHLESS MOTOR

### UP TO 50% LONGER MOTOR LIFE

The Makita-built brushless motor eliminates carbon brushes, enabling the motor to run cooler and more efficiently for longer life. The electronically-controlled brushless motor efficiently uses energy to match torque and RPM to the changing demands of the application.



## LOW-REACTION TECHNOLOGY

### BENEFITS

Dramatically reduces repetitive motion stress experience when operating clutch-based tools within assembly facilities. Reduces cumulative wrist strain, operator fatigue, lowers the instance of injury caused by repetitive fastening tasks, and can reduce company healthcare costs related to repetitive motion stress.

### TECHNOLOGY

Clutch components utilizing proprietary, patented technology significantly reduces the "kickback" experienced once final torque is applied by clutch tooling. Available as a retrofit to existing BFT, BFL\*, and DFT\*\* Series Makita clutch tools, or included as OEM component on new tools.

\*Available for BFL300FZ, 301RZ, 400FZ, and 402RZ models.  
\*\*Available for DFT085FMZ and 127FMZ models



# PRODUCTION & ASSEMBLY

PRODUCT CATALOG

**BRUSHLESS PROGRAMMABLE SCREWDRIVERS**  
PAGE 4

**ASSEMBLY PISTOL SCREWDRIVERS**  
PAGE 6

**PRECISE CONTROL RIGHT ANGLE NUT-RUNNERS**  
PAGE 8

**BRUSHLESS PRECISE CONTROL RIGHT ANGLE NUT-RUNNERS**  
PAGE 9

**TORQUE TRACER**  
PAGE 10

**PROGRAMMABLE SHUT-OFF IMPACTS**  
PAGE 12

**HAZLOC® SCREWDRIVERS**  
PAGE 14

**ACCESSORIES**  
PAGE 15

# BRUSHLESS PROGRAMMABLE SCREWDRIVERS

## PRECISE TORQUE CONTROL SCREWDRIVERS

### Lightweight and Ergonomic

Only 6-3/4" in length and weighs only 2.4 lbs. with battery  
(DFT023FMZ and DFT045FMZ models)

### Built-In L.E.D. Light

Illuminates work surface for better visibility in low light environments

### Brushless Motor

Makita-built motor technology provides higher speeds and advanced monitoring

### Lithium-Ion Battery

For extended run time and total lifetime charge cycles

### Audible Signal

For incomplete or bad fastening

### DFT045FMZ

14.4V Lithium-Ion Brushless Cordless 1/4" Hex Screwdriver  
(Battery not included)



Color-Coded Identification Plate  
With unique I.D. number

Large Pass/Fail L.E.D.  
Indicates sufficient and insufficient fastening achievement and audibly alerts operator to failed fastenings

6-Phase Rundown Programming  
RPM and Directional programming via USB port for multi-stage rundown control. Provides better quality fastening and assists in cross-thread detection.

### MAINTENANCE MODE

- Included software has the ability to pre-program a maintenance cycle
- Tool notifies operator at maintenance interval for calibration and/or preventative maintenance needed

### SMART SYSTEM

#### Auto Battery Shutoff

- Shuts off the tool when battery capacity is less than 5%
- Ensures consistent fastening torque



### PASS/FAIL L.E.D. LAMP

Large Pass/fail lamp indicates sufficient and insufficient fastening achievement and audibly alerts operator to failed fastenings.



### RPM & DIRECTIONAL PROGRAMMING

RPM and Directional programming via USB for multi-stage rundowns.

## PRECISE TORQUE CONTROL SCREWDRIVERS



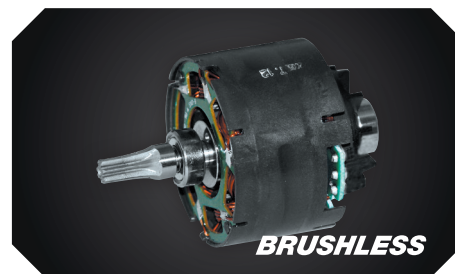
	DFT023FMZ	DFT045FMZ	DFT085FMZ / DFT085FMAZ*	DFT127FMZ / DFT127FMAZ*
Voltage	14.4V	14.4V	14.4V	14.4V
Capacities	1/4" Hex Shank	1/4" Hex Shank	1/4" Hex Shank	1/4" Hex Shank
Fastening Torque	.5-2 Nm (4-18 in. lbs.)	1-4 Nm (9-35 in. lbs.)	3-8 Nm (27-71 in. lbs.)	5-12 Nm (44-106 in. lbs.)
No Load Speed (RPM)	400 - 1,300	150 - 900	150 - 900	100 - 600
Length (w/Battery)	6-1/4"	6-1/4"	7-1/2"	7-1/2"
Height (w/Battery)	9-3/4"	9-3/4"	10"	10"
Width (w/Battery)	2-13/16"	2-13/16"	2-13/16"	2-13/16"
Weight (w/Battery)	2.4 lbs.	2.4 lbs.	2.9 lbs.	2.9 lbs.
Battery	BL1430B, BL1415NA	BL1430B, BL1415NA	BL1430B, BL1415NA	BL1430B, BL1415NA

\*FMAZ suffix indicates Low-Reaction model.



### LITHIUM-ION BATTERY

Precision sensor informs operator of insufficient battery charge level through visual and audible indicators.



### BRUSHLESS MOTOR

Makita-Built motor technologies provide higher speeds and advanced monitoring.



### BUILT-IN L.E.D. LIGHT

Built-in L.E.D. light illuminates work surface for better visibility in low light environments.




### TORQUE ACCURACY

"Real World" accuracy has earned certification within major Automotive and Aerospace Assemblers achieving repeatability within 4% of mean torque.

# ASSEMBLY PISTOL SCREWDRIVERS

## PRECISE CONTROL SCREWDRIVERS



**Torque Set Window**  
Allows the operator to view the desired torque setting

**Color Coded ID Plate**  
For easy tool and application identification

**Rubber Chuck Cover**  
Protects the workpiece

**"Quick-Change" 1/4" Hex Chuck**  
Accepts standard 1/4" hex bits

**Built-in L.E.D. Lamps**  
Illuminates the work surface for better visibility in low light environments

**Forward/Reverse Switch**  
Conveniently located for increased comfort and efficiency

**Large On/Off Switch**  
Equipped with a delayed re-start

**Nut and Bolt Construction**  
Allows repeat disassembly, preventing damage to the housing

**Anti-Slip Dimpled Grip**  
Provides comfort and operator control

**Smooth Shut-Off Operation**  
Once preset torque is achieved, the clutch activates, automatically halting applied torque

**Externally Accessible Brushes**  
Allows for easy service replacement and extended motor life

**Two-Piece d-28R Motor**  
Replaceable armature and powerful rare earth magnet

**Pass/Fail Indicator Lamp & Audible Signal**  
Provides operator with immediate feedback on fastening achievement

**High Performance DEBR**

**BFT126FZ**  
14.4V Lithium-Ion Cordless 1/4" Hex Screwdriver  
(Battery not included)

**Utilizing ISO5393 Standards**  
All BFT Series models provide Cm ratings > 1.67

**Torque Accuracy**  
+/- 10% with Cm ≥ 1.67

**USER-FRIENDLY ELECTRONIC CONTROLS**

- Soft start to suppress reaction and allow for smooth fastening
- One-second restart delay minimizes the potential for operator double-hits
- Delayed restarter controls the motor so that it doesn't start until one second passes after a screw has been driven; the motor does not start even if switch trigger is pulled
- Reduces deviation from pre-set fastening torque caused by unintentional over-tightening environment



### REPETITIVE ACCURACY

- Torque Accuracy**
- Long-life clutch provides consistent operation within +/-10% of mean torque with real-world repeatability consistencies within +/-4%.



### SMART SYSTEM

- Auto Battery Shutoff**
- Shuts off the tool when battery capacity is less than 5%.
  - Ensures consistent fastening torque.
- Indication Lamp and Audible Alert**
- Precision sensor indicates fastening sufficiency and battery power conditions with light and/or audible alert.

## PRECISE TORQUE CONTROL SCREWDRIVERS



	BFT022FZ	BFT044FZ	BFT083FZ
Voltage	14.4V	14.4V	14.4V
Capacities	1/4" Hex Shank	1/4" Hex Shank	1/4" Hex Shank
Fastening Torque	0.5-2.0 Nm (4-18 in. lbs.)	1-4 Nm (9-35 in. lbs.)	3-8 Nm (27-71 in. lbs.)
No Load Speed (RPM)	700	950	80
Length	7-7/8"	7-7/8"	7-7/8"
Height (w/Battery)	10-1/4"	10-1/4"	10-1/4"
Width	2-9/16"	2-9/16"	2-13/16"
Weight (w/Battery)	3.3 lbs	3.3 lbs	3.3 lbs
Battery	BL1430B, BL1415NA	BL1430B, BL1415NA	BL1430B, BL1415NA



	BFT084FZ / BFT084FAZ*	BFT126FZ / BFT126FAZ*
Voltage	14.4V	14.4V
Capacities	1/4" Hex Shank	1/4" Hex Shank
Fastening Torque	3-8 Nm (27-71 in. lbs.)	5-12 Nm (44-106 in. lbs.)
No Load Speed (RPM)	780	410
Length	7-7/8"	7-7/8"
Height (w/Battery)	10-1/2"	10-1/4"
Width	2-9/16"	2-9/16"
Weight (w/Battery)	3.3 lbs	3.3 lbs
Battery	BL1430B, BL1415NA	BL1430B, BL1415NA

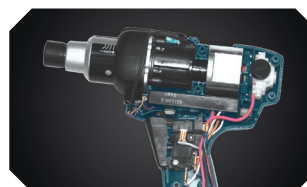
\*FAZ suffix indicates Low-Reaction model.



### ADVANCED TECHNOLOGY

#### Two-Piece D-28 Motor

- Replaceable armature allows greater serviceability.
- Dual sealed ball bearings for less friction and greater efficiency.
- High performance fan reduces temperatures and increases tool life.
- High-grade magnet generates maximum performance.



### LOW OWNERSHIP COST

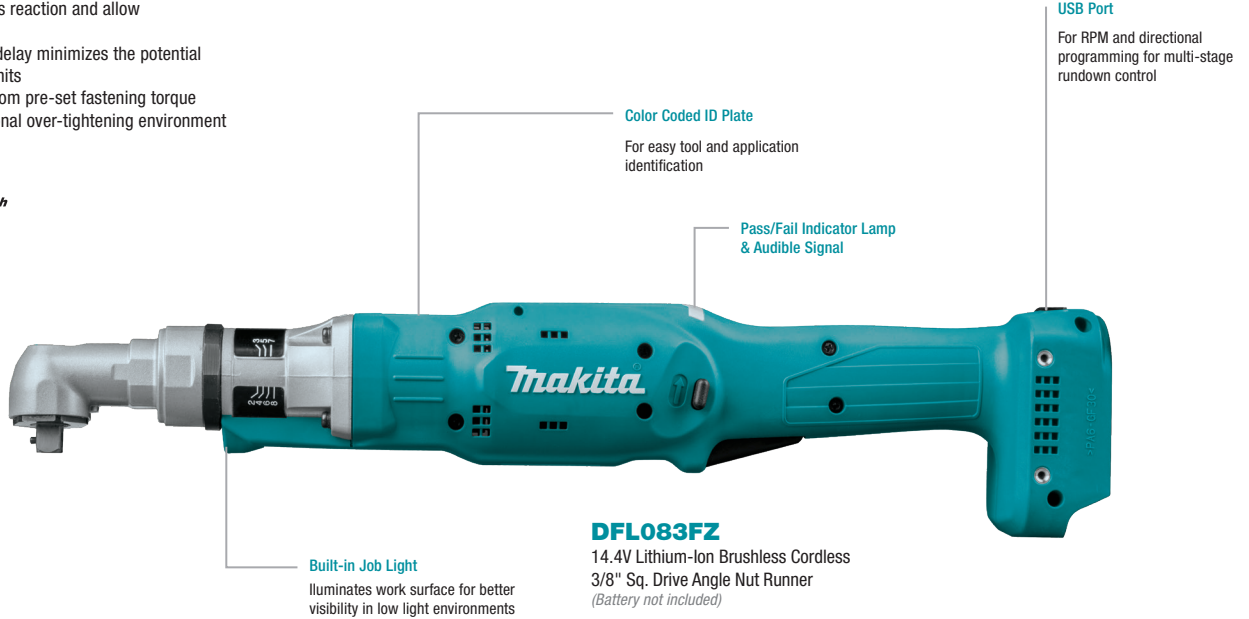
#### Designed for High Endurance Applications

- Nut and bolt housing assembly ensures long term housing integrity.
- Replaceable brushes easily accessed without the need to open the tool housing.
- Solder-less internal components for easy and fast replacement.

# BRUSHLESS PRECISE CONTROL RIGHT ANGLE NUT-RUNNERS

## BUILT-IN ELECTRONIC SYSTEM

- Soft start to suppress reaction and allow for smooth fastening
- One-second restart delay minimizes the potential for operator double-hits
- Reduces deviation from pre-set fastening torque caused by unintentional over-tightening environment

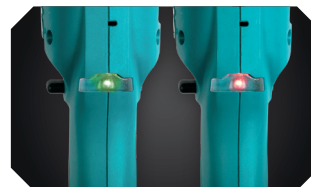


	<b>DFL083FZ</b>	<b>DFL083F5Z</b>	<b>DFL125FZ</b>	<b>DFL125F5Z</b>	<b>DFL204FZ</b>
<b>Voltage</b>	14.4V	14.4V	14.4V	14.4V	14.4V
<b>Capacities</b>	3/8" Square Drive	1/4" Square Drive	3/8" Square Drive	1/4" Square Drive	3/8" Square Drive
<b>Fastening Torque</b>	2-8 Nm (18-71 in. lbs.)	2-8 Nm (18-71 in. lbs.)	5-12 Nm (44-106 in. lbs.)	5-12 Nm (44-106 in. lbs.)	8-20 Nm (71-177 in. lbs.)
<b>No Load Speed (RPM)</b>	150 - 700	150 - 700	100 - 700	100 - 700	100 - 440
<b>Length (w/Battery)</b>	22	22	22	22	22
<b>Height (w/Battery)</b>	3-5/32"	3-5/32"	3-5/32"	3-5/32"	3-5/32"
<b>Width</b>	4-11/64"	4-11/64"	4-11/64"	4-11/64"	4-11/64"
<b>Weight (w/Battery)</b>	4.7 lbs.	4.7 lbs.	4.7 lbs.	4.7 lbs.	4.7 lbs.
<b>Battery</b>	BL1430B/BL1460A	BL1430B/BL1460A	BL1430B/BL1460A	BL1430B/BL1460A	BL1430B/BL1460A



### RPM & DIRECTIONAL PROGRAMMING

RPM and directional programming via USB port for multi-stage rundown control



### PASS/FAIL INDICATOR LAMP

Indicates sufficient and insufficient fastening achievement and audibly alerts operator to failed fastenings.



# BRUSHLESS PRECISE CONTROL RIGHT ANGLE NUT-RUNNERS

## TORQUE-SPECIFIC TO INSTALL FASTENERS ACCURATELY

"Real World" accuracy has earned certification within major automotive and aerospace assemblers achieving repeatability within 4% of mean torque

### LXT<sup>®</sup> BRUSHLESS



#### Pass/Fail Indicator Lamp & Audible Signal

Indicates sufficient and insufficient fastening achievement and audibly alerts operator to failed fastenings

#### 18V LXT Compatibility

Makita's 18V LXT<sup>®</sup> battery is compatible with over 175 LXT<sup>®</sup> cordless tools

#### DFL651FZ

18V LXT<sup>®</sup> Lithium-Ion Cordless High Torque 3/8" Angle Nut Runner  
(Battery not included)

#### Built-in L.E.D. Light

Illuminates work surface for better visibility in low light environments

#### Programmable Speed Control

80-200 RPM; down shift and counterclockwise rundown capabilities

#### Mounting Holes

Allow for easy fixturing and balancing

#### 6-Phase Rundown Programming

for better quality fastenings



**BRUSHLESS**



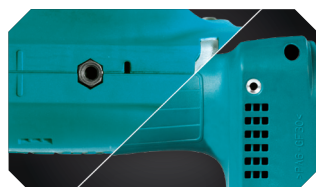
**BRUSHLESS**



**LXT<sup>®</sup> BRUSHLESS**

	DFL302FZ/DFL302FAZ <sup>+</sup> 1	DFL403FZ / DFL403FAZ <sup>+</sup> 1	DFL651FZ <sup>1</sup> / DFL651FAZ <sup>+</sup> 1
Voltage	14.4V	14.4V	18V LXT <sup>®</sup>
Capacities	3/8" Square Drive	3/8" Square Drive	3/8" Square Drive
Fastening Torque	16-30 Nm (142-266 in. lbs.)	25-40 Nm (221-354 in. lbs.)	25-65 Nm (221-575 in. lbs.)
No Load Speed (RPM)	70 - 230	50 - 220	80-200
Length (w/Battery)	22	22	23"
Height (w/Battery)	3-5/32"	3-5/32"	4-9/16"
Width (w/Battery)	4-11/64"	4-11/64"	2-15/16"
Weight (w/Battery)	5.1 lbs.	5.1 lbs.	6 lbs
Battery	BL1430B/BL1460A	BL1430B/BL1460A	BL1830B, BL1840B, BL1850B

<sup>1</sup>FAZ suffix indicates Low-Reaction model.  
<sup>1</sup>Programmability via USB port.



#### BALANCING/TETHERING

- Conveniently placed threaded holes on the top and side of tool allow for easy balancing or tethering in your workstation application.



#### BUILT-IN L.E.D. LIGHT

- Built-in L.E.D. light illuminates work surface for better visibility in low light environments.

# TORQUE TRACER

## SMART TOOLS PROVIDING QUALITY ASSURANCES VIA WIRELESS COMMUNICATION

- Identifies multiple fastening characteristics for each rundown
- Flexible systems conform to a broad variety of environments
- Maintains cordless freedom of operator benefits while improving quality assurance best practices
- Provides an energy efficient alternative to pneumatic platforms involving verifiers/qualifiers
- Adds traceability measures in environments wanting cordless flexibility and safety
- An alternative to expensive DC electric tool platforms
- Uses Bluetooth frequency spectrum and Adaptive Frequency Hopping to assure an interference-free environment



- "Quick Change" 1/4" Hex Chuck
- Long-life Clutch for High Repeatability
- Auto-Stop Fastening Functioning
- Built-in L.E.D. Lamps
- Makita-Built Brushless Motor
- Slim-Line Anti-Slip Dimpled Grip
- L.E.D. Operator Signal and Audible Alarm
- Auto Battery Shutoff

**BFT041RZ**  
14.4V Lithium-Ion Cordless 1/4" Hex Torque Tracer Screwdriver  
*(Battery not included)*



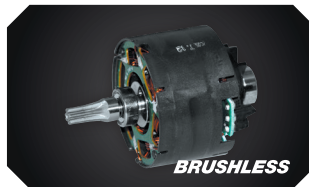
- Built-in L.E.D. Lamps
- Makita-Built Brushless Motor
- Long-life Clutch for High Repeatability
- Torque Set Window
- Slim-Line Anti-Slip Dimpled Grip
- L.E.D. Operator Signal and Audible Alarm
- Auto Battery Shutoff

**BFL201RZ**  
14.4V Lithium-Ion Cordless 3/8" Sq. Drive Torque Tracer Angle Nut Runner  
*(Battery not included)*



**BLUETOOTH® RECEIVER**

Bluetooth receiver provides communication with tool. 24v discreet I/O for PASS/FAIL/BATCH to communicate with PLC. Serial port for downloading fastening data and torque values to PC.



**BRUSHLESS MOTOR**

Makita-Built motor technologies provide higher speeds and advanced monitoring.



**14.4V LITHIUM-ION**

High productivity with reduced weight. Very low self-discharge rates.

## TORQUE-TRACER WIRELESS COMMUNICATION TOOLS



	BFT041RZ	BFT082RZ / BFT082RAZ	BFT124RZ / BFT124RAZ
Voltage	14.4V	14.4V	14.4V
Capacities	1/4" Hex Shank	1/4" Hex Shank	1/4" Hex Shank
Fastening Torque	1-4 Nm (9-35 in. lbs.)	4-8 Nm (35-71 in. lbs.)	6-12 Nm (53-106 in. lbs.)
No Load Speed (RPM)	800	860	600
Length	7-1/2"	7-1/2"	7-1/2"
Height (w/Battery)	10-1/2"	10-1/2"	10-1/2"
Width	2-13/16"	2-13/16"	2-13/16"
Weight (w/Battery)	3.3 lbs	3.3 lbs	3.3 lbs
Battery	BL1430B	BL1430B	BL1430B

\*RAZ suffix indicates Low-Reaction model.

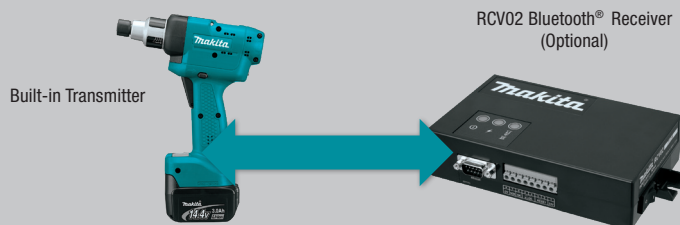


	BFL201RZ / BFL201RAZ*	BFL301RZ / BFL301RAZ*	BFL402RZ / BFL402RAZ*
Voltage	14.4V	14.4V	14.4V
Capacities	3/8" Sq. Drive	3/8" Sq. Drive	3/8" Sq. Drive
Fastening Torque	10-20 Nm (89-177 in. lbs.)	16-30 Nm (142-266 in. lbs.)	25-40 Nm (221-354 in. lbs.)
No Load Speed (RPM)	360	260	200
Length	16-7/8"	18-3/4"	18-3/4"
Height (w/Battery)	3-7/8"	3-7/8"	3-7/8"
Width	2-13/16"	2-13/16"	2-13/16"
Weight (w/Battery)	3.8 lbs	4.4 lbs	4.4 lbs.
Battery	BL1430B	BL1430B	BL1430B

\*RAZ suffix indicates Low-Reaction model.

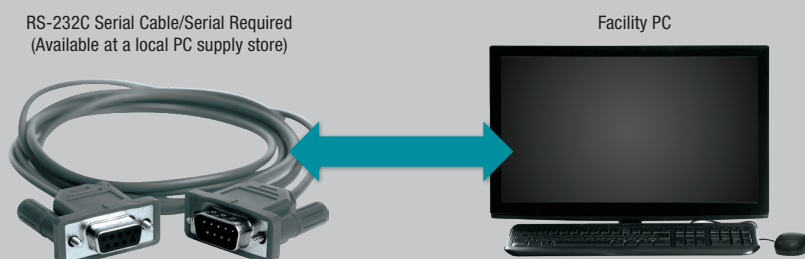
### TOOL RECOGNITION

- Fastening torque values
- Fastening angle values
- Rundown rotations
- Tool ID recognition
- Time/date snap
- OK-NOK parameter achievement
- Batch achievement



### PROGRAMMING INTERACTIVITY

- Torque value tolerance range
- Angle value tolerance range
- Rundown rotation min/max settings
- Tool lock down mode
- Tool brake option
- Soft start adjustment
- Calibration ability
- Batch management (PLC-based)
- Log all data from tool recognition



# PROGRAMMABLE SHUT-OFF IMPACTS

## EXTRA-COMPACT DESIGN



**Rubberized Bit Sleeve**  
Protects workpiece from scratches and damages

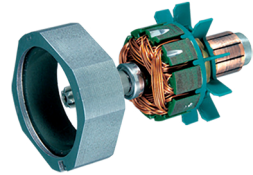
**Single L.E.D. Job Light**  
With preglow and afterglow functions

**Easy-to-Pull Trigger Switch**  
With a 6mm short stroke is ideal for assembly and manufacturing applications. Minimizes operators hand and finger fatigue in long, continuous operation in assembly and manufacturing applications

**Automatic Impact Stop System**  
Model: BTW104Z, BTD044Z, BTD064Z, BTD104Z

**BTD044Z**  
14.4V Lithium-Ion Cordless  
1/4" Hex Impact Driver  
*(Battery not included)*

**Compact and Lightweight 4-Pole Motor**



**Indicating Lamp**  
Model: BTW104Z, BTD044Z, BTD064Z, BTD104Z

**Ergonomically Designed Handle**  
Provides comfortable grip and more control while minimizing hand fatigue and pain

**Color Coded Plates**  
For easy model identification

- 35 Nm
- 65 Nm
- 95 Nm

**Powered by 14.4V Lithium-Ion Batteries**  
With battery fuel gauge

## PROGRAMMABLE SHUT-OFF IMPACT DRIVERS



	BTD044Z	BTD064Z	BTD104Z
Voltage	14.4V	14.4V	14.4V
Capacities	1/4" Hex Shank	1/4" Hex Shank	1/4" Hex Shank
Maximum Torque	35 Nm (26 ft. lbs.)	65 Nm (50 ft. lbs.)	95 Nm (70 ft. lbs.)
Rundown Programming	Yes	Yes	Yes
No Load Speed (RPM)	0 - 2,300	0 - 2,500	0 - 2,700
Impacts Per Minute (IPM)	0 - 3,500	0 - 3,500	0 - 3,500
Length	6-7/16"	6-7/16"	6-5/8"
Height (w/Battery)	9-5/16"	9-5/16"	9-7/8"
Width	2-5/8"	2-5/8"	2-15/16"
Weight (w/Battery)	2.4 lbs.	2.4 lbs.	2.4 lbs.
Battery	BL1415NA	BL1415NA	BL1415NA

## PROGRAMMABLE SHUT-OFF IMPACT WRENCHES



	BTW104Z	BTW151Z
Voltage	14.4V	14.4V
Capacities	3/8" Square Drive	1/2" Square Drive
Maximum Torque	95 Nm (70 ft. lbs.)	150 Nm (110 ft. lbs.)
Rundown Programming	Yes	Yes
No Load Speed (RPM)	0 - 2,700	0 - 2,300
Impacts Per Minute (IPM)	0 - 3,500	0 - 3,000
Length	5-11/16"	7-5/8"
Height (w/Battery)	9-7/8"	10"
Width	2-15/16"	3-1/16"
Weight (w/Battery)	2.4 lbs.	4.2 lbs.
Battery	BL1415NA	BL1430B



### ADVANCED TECHNOLOGY

#### Vari-Torque System

- Pre-set the tool to stop at the programmed number of impacts, providing consistent torque when fastening.



### PASS/FAIL INDICATOR LAMP

- Indicates sufficient and insufficient fastening achievement and audibly alerts operator to failed fastenings.

# HAZLOC®

CLASS 1 DIVISION 2 RATED

## CLASS I DIVISION 2 RATED

- UL listed for Class I Division 2 locations for maximum 50°C ambient
- Meets the NEC Article 513 Aircraft Hangar requirements for Class I Division 2 locations
- Tested to Mil Standard 810F, Method 511.4

2.0Ah  
Max. Peak Output  
12V  
Li-Ion

**MAKSTAR**



"Quick Change" 1/4" Hex Shank Chuck

Torque Adjusting System

Built-In L.E.D. Light

Auto-Stop Fastening Function

Anti-Slip Dimpled Grip

Beeper Indicator

L.E.D. Indicator



## HAZLOC® SCREWDRIVERS



	BFH040FRAE	BFH040RAE	BFH090FRAE	BFH090RAE	BFH120FRAE
Voltage	12V	12V	12V	12V	12V
Capacities	1/4" Hex Shank	1/4" Hex Shank	1/4" Hex Shank	1/4" Hex Shank	1/4" Hex Shank
Max Fastening Torque (Nm)	0.8-4.5 Nm (7-40 in. lbs.)	0.8-4.5 Nm (7-40 in. lbs.)	3.4-9.0 Nm (30-80 in. lbs.)	3.4-9.0 Nm (30-80 in. lbs.)	5.0-12.0 Nm (44-106 in. lbs.)
No Load Speed (RPM)	400	400	400	400	400
L.E.D. Lamp	YES	NO	YES	NO	YES
L.E.D. Pass/Fail	YES	YES	YES	YES	YES
Audible Signal	YES	NO	YES	NO	YES
Length	7-15/32"	7-15/32"	7-15/32"	7-15/32"	7-15/32"
Height	10-15/32"	10-15/32"	10-15/32"	10-15/32"	10-15/32"
Width	2-13/16"	2-13/16"	2-13/16"	2-13/16"	2-13/16"
Weight	3.3 lbs	3.3 lbs	3.3 lbs	3.3 lbs	3.3 lbs
Battery	BH1220	BH1220	BH1220	BH1220	BH1220



### REPETITIVE ACCURACY

- Torque Accuracy**
- Long-life clutch provides consistent operation within +/-10% of mean torque with real-world repeatability consistencies within +/-4%.



### SMART SYSTEM

- Auto Battery Shutoff**
- Shuts off the tool when battery capacity is less than 5%.
  - Ensures consistent fastening torque.
- Indication Lamp and Audible Alert**
- Precision sensor indicates fastening sufficiency and battery power conditions with light and/or audible alert.

## BATTERIES AND CHARGERS



Model No.	Battery	Voltage	Cell Type	Amp Hours	Charge Time	Charger(s)
BL1430B	BL1430B	14.4v	Lithium-Ion	3.0Ah	22 Minutes	DC18RC, DC18RD, DC18SF
BL1415NA	BL1415NA	14.4v	Lithium-Ion	1.5Ah	20 Minutes	
BL1820B	BL1820B	18v	LXT® Lithium-Ion	2.0Ah	25 Minutes	DC18RC, DC18RD, DC18SF
BL1830B	BL1830B	18v	LXT® Lithium-Ion	3.0Ah	30 Minutes	
BL1840B	BL1840B	18v	LXT® Lithium-Ion	4.0Ah	40 Minutes	
BL1850B	BL1850B	18v	LXT® Lithium-Ion	5.0Ah	45 Minutes	
BL1860B	BL1860B	18v	LXT® Lithium-Ion	6.0Ah	55 Minutes	
193931-1	BH1233C	MAKSTAR® 12v	Ni-MH	3.3Ah	60 Minutes	DC18RC, DC18RD
193929-8	BH1220C	MAKSTAR® 12v	Ni-MH	2.0Ah	30 Minutes	

Model No.	Description	Voltage	Cell Type	Battery
DC18RC	18V LXT® Lithium-Ion Rapid Optimum Charger	12V - 18V	Lithium-Ion & Ni-MH	BL1820B, BL1830B, BL1840B, BL1850B, BL1860B, BL1415NA, BL1430B, BH1220C, BH1233C
DC18RD	18V LXT® Lithium-Ion Dual Port Rapid Optimum Charger	12V - 18V	Lithium-Ion & Ni-MH	BL1820B, BL1830B, BL1840B, BL1850B, BL1860B, BL1415NA, BL1430B, BH1220C, BH1233C
DC18SF	18V LXT® Lithium-Ion 4-Port Charger	14.4V - 18V	Lithium-Ion	BL1820B, BL1830B, BL1840B, BL1850B, BL1860B, BL1415NA, BL1430B
193681-8	Battery Refreshing Adaptor	9.6V - 12V	Ni-MH	BH1233C, BH1220C

## PRODUCTION TOOLING ACCESSORIES

### BFT & BFL STANDARD TOOL COVER

Part No.	Color	Applicable Models
Pistol		
450331-1	Clear	BFT022FZ, BFT044FZ/041RZ, BFT084FZ/082RZ, BFT126FZ/124RZ
418425-8	Red	
418424-0	Blue	
418423-2	Yellow	
Right Angle		
418066-0	Clear	BFL082FZ, BFL122FZ, BFL202FZ/201RZ
418065-2	Red	
418064-4	Blue	
418032-7	Yellow	

### BFT LOW-REACTION TOOL COVER

Part No.	Color	Applicable Models
Pistol		
A-51281	Clear	BFT084FAZ/082RAZ, BFT126FAZ/124RAZ
A-51275	Red	
A-51269	Blue	
A-51253	Yellow	

### BFL RIGHT ANGLE TWO-PIECE SETS (Set Requires both A & B)

Part No.	Color	Applicable Models
418745-0	Clear	(A) BFL300FZ/FAZ, 301RZ/RAZ, BFL400FZ/FAZ, 402RZ/RAZ
418744-2	Red	
418743-4	Blue	
418691-7	Yellow	
418748-4	Clear	(B) BFL300FZ/FAZ, 301RZ/RAZ
418747-6	Red	
418746-8	Blue	
418692-5	Yellow	
418751-5	Clear	(B) BFL400FZ/FAZ, 402RZ/RAZ
418750-7	Red	
418749-2	Blue	
418693-3	Yellow	

### BTD SHUT-OFF IMPACT TOOL COVERS

Part No.	Color	Description
454420-4	Blue	Fits all Compact BTD impacts
454421-2	Clear	
454422-0	Red	

### DFT STANDARD TOOL COVERS

Part No.	Color	Description
424984-2	Clear	DFT023FMZ & DFT045FMZ
424985-0	Red	
424986-8	Blue	
424987-6	Yellow	
424969-8	Clear	DFT085FMZ & DFT127FMZ
424968-0	Red	
424967-2	Blue	
424966-4	Yellow	

### DFT LOW REACTION TOOL COVERS

Part No.	Color	Description
424973-7	Clear	DFT085FMAZ & DFT127FMAZ Low Reaction
424972-9	Red	
424971-1	Blue	
424970-3	Yellow	

### BL1430B & BL1415NA BATTERY COVER

Part No.	Color	Description
450599-9	Clear	BL1430B Battery Cover
454407-6	Clear	BL1415NA Battery Cover

### TORQUE ADJUSTING KEY

Part No.	Description	Applicable Models
765025-8		All clutch tools



**DF012DSE**  
7.2V Lithium-Ion Cordless 1/4" Hex Driver-Drill Kit with Auto-Stop Clutch

Makita-built motor delivers 71 in.lbs. of Max Torque in a compact design



**TD012DSE**  
7.2V Lithium-Ion Cordless 1/4" Hex Impact Driver Kit

Makita-built motor delivers 195 in.lbs. of Max Torque in a compact design

# SMALLER. LIGHTER. SMARTER.



## ADVANCED ERGONOMICS

**ONLY 6-3/8"**  
IN LENGTH

**ONLY 2.4 LBS.**  
WITH BATTERY

**DFT045FMZ**  
14.4V Lithium-Ion Cordless  
1/4" Hex Screwdriver

## 6-STAGE PROGRAMMABLE PRECISION FASTENING

- Spindle Direction by Time or Rotation
- Speed Management by Time or Rotation
- Finishing Strategy

**ALSO FEATURES PREVENTATIVE  
MAINTENANCE SCHEDULING**



[makitaassemblytools.com](http://makitaassemblytools.com)

999CAT3 MAK-0516 MA-6607-16

The MAKITA TEAL COLOR is the trade dress of Makita Corporation and is protected under common law and registered with the U.S. Patent and Trademark Office. The Makita Black & White color combination is the trade dress of Makita Corporation and is protected under common law with the U.S. Patent and Trademark Office.